

'Yeoman' *Attachments*

Fitting Instructions and Parts List

CUTTER BAR

Fitting Instructions.

1. Remove the Rotor unit or other attachment from the 'Yeoman'.
2. Remove Bumper Bar Tube.
3. Place the assembled Cutter Bar attachment flat on the ground.
4. With the 'Yeoman' placed in the gap between the pulley wheels and the clamping bar, lift the pulley end of the Cutter Bar, slide forward and fit in the same way as the rotor unit.
5. Substitute the Cutter Bar Clamping Bar (Illus. No. 94) for the Yeoman Bumper Bar noting that the Clamping Bar fits underneath the two short bars attached to the engine and that the clamps are now used the other way up.

Working Instructions.

The Cutter Bar is started in the same way as the Rotor unit. The Bar should be driven so that the point of the swath plate is always on the side of the long, uncut grass. The point deflects the grass to be cut away from the uncut grass, and also prevents grass wrapping round the engine starter pulley. By this means a clean cut line is left between the cut and uncut grass.

The high ratio, and the high road speed should be used for all cutting. But when very thick, wet, matted grass is to be cut it may be necessary to use the low road speed.

The ground to be cut should be free from stones, bricks, pieces of wire, etc. If the blades jam with something solid, the clutch should be disengaged, the 'Yeoman' pulled back a foot or two and the obstruction removed before starting work again.

Lubrication.

Use gear oil S.A.E. 140. These are the oiling points:

1. **Drive Shaft Housing.** Nipple in front of small pulley wheel. (Illus. No. 15). Oil each time before use.
2. **Support Tube.** Nipple (Illus. No. 24) in front of large

pulley wheel and at lower end. (Illus. No. 31) Oil each time before use.

3. **Comb Shoe.** Nipple (Illus. No. 73) at lower end of long support tube. Oil each time before use.
4. **Connecting Rod Bush.** At the small end of the connecting rod there is another nipple. Oil before use and at hourly intervals during use. (Illus. No. 44).
5. **Blades.** Keep a film of oil between blades, and between blades and pressure plates. Oil hourly during use. Lubrication of the pressure plates is most important.

Adjustments.

1. **Belt Adjustment.** Tension in the belt is adjusted by loosening the setscrews (Illus. No. 13), levering the long support tube outwards with a convenient bar until the desired tension is obtained, and then tightening the setscrews.
2. **Cutter Bar Level.** The cutter bar is designed to follow irregularities in the ground and provision for lateral adjustment is provided by the spring (Illus. No. 35) which can be slackened or tightened as required by means of a nut (Illus. No. 36).
3. **Pressure Plate.** The pressure plates (Illus. Nos. 61 & 72) keep the moving blades on the fixed blades. They should be adjusted to give efficient cutting along the whole length of the cutting bar, while allowing the blades to run without jumping or overheating. This is obtained by means of shims (Illus. No. 62). These are packs of metal foil from which one foil should be removed or added at a time until the correct pressure is obtained.
4. **Blade Height.** The height of the blades above ground may be adjusted by the setscrews and locknuts (Illus. Nos. 66 and 67).
5. **General Adjustments.**
 - (a) The setscrew and nut (Illus. Nos. 88 and 90) at swath plate end of support link (Illus. No. 92) should be adjusted to allow the swath plate to slide freely

ROTARY HOES LTD. - WEST HORNDON - ESSEX

along its slot. About 1/32" clearance is suitable. The setscrew (Illus. No. 91) should also be adjusted to allow for swivelling.

(b) All other nuts and setscrews should be tightened and checked regularly.

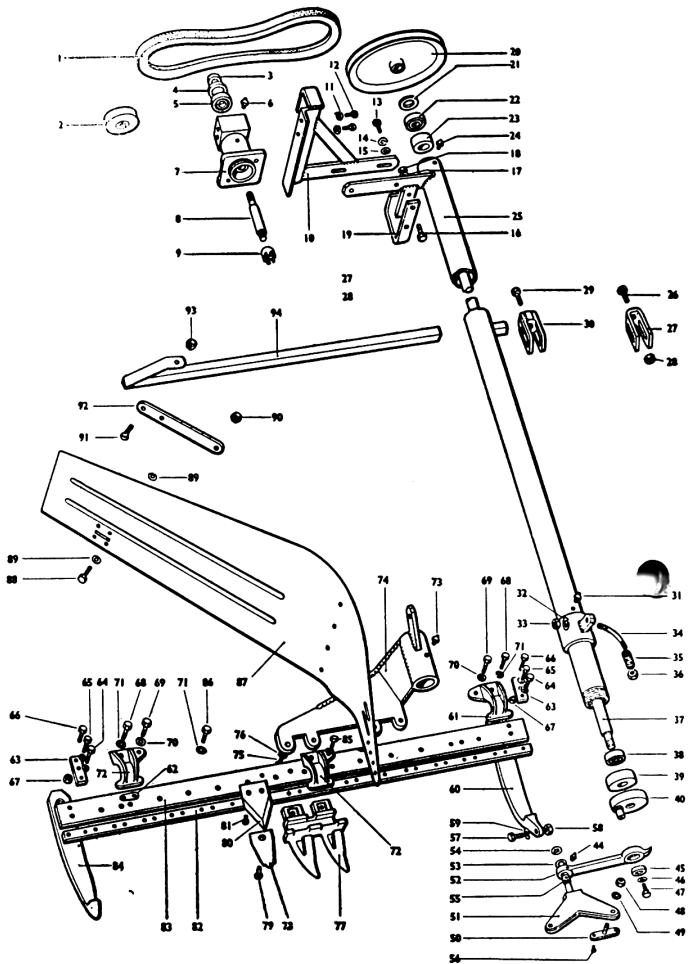
6. **Blade-Sharpening.** To remove the moving blade assembly for sharpening: undo the two nuts (Illus. No. 48) and remove the blade gudgeon pin (Illus. No. 51). The blade assembly can then be withdrawn. To reassemble, reverse the process.

CUTTER BAR

The pre-fix letter and number of the attachment are stamped on the support tube (Ill. No. 25) between the top oiling nipple and the pulley. We cannot guarantee that correct replacements will be supplied unless these, and the correct part number, are quoted.

Illus. No.	Part No.	Description	No. off.
1	17407	Vee Belt	1
2	17392	Pulley	1
3	17203	Spacer	1
4	Oilseal	W.187 125 31	1
5	BRL.3/4"	Ball Bearing 1.7/8" O.D. x 3/4" I.D. x 9/16" wide	1
6		Grease Nipple 1/4" B.S.F. (NC. 6059)	1
7	17001	P.T.O. Housing	1
8	17201	Shaft	1
9	16597	Fixed Dog	1
10	17378	Pick Up Bracket	1
11		Spring Washer 3/8" dia.	2
12		Setscrew 3/8" B.S.F. x 3/4" long Hex. Head	2
13		Setscrew 5/16" B.S.F. x 5/8" long Hex. Head	2
14		Spring Washer 5/16" dia.	2
15		Washer 5/16" dia.	2
16		Bolt 1/4" B.S.F. x 3/4" long	2
17		Spring Washer 1/4" dia.	2
18		Nut 1/4" B.S.F.	2
19	17398	Belt Guard	1
20	17389	Pulley Wheel	1
21	20736	Bearing Cover	1
22	BRL.015	Ball Bearing 35mm. O.D. 15mm. I.D. 11mm. wide	1
23	20859	Oil Retaining Sleeve	1
24		Grease Nipple 1/4" B.S.F. (NC. 6059)	1
25	17374	Support Tube	1
26		Bolt 1/2" U.N.F. x 1.1/8" long	1
27	* 17312	Clamp	1
28		Nut 1/2" U.N.F.	1
29		Setscrew 1/2" B.S.F. x 1" long Hex. Head	1
30	* 17302	Clamp	1
31		*Alternative Fitment Grease Nipple 1/4" B.S.F. (NC.6059)	1
32		Spring Washer 5/16" dia.	1
33		Nut 5/16" B.S.F.	1
34	20792	Curved Stud	1
35	20875	Spring	1

When ordering parts always quote the pre-fix letter and number of the attachment, the type of attachment and the part number (not the Illustration number).



Illus. No.	Part No.	Description	No. Off
36		Nut 5/16" B.S.F.	1
37	17387	Crank Drive Shaft	1
38	BRL.015	Ball Bearing (35mm. O.D. 15 mm. I.D. 11mm. wide)	1
39	17390	Support Tube Cap	1
40	17386	Crank	1
44		Grease Nipple 1/4" B.S.F. (NC.6059)	1
45		Ballrace 30mm. O.D. 10mm. I.D. 9mm. wide (Double Neoprene Sealed) Type DN.200	1
46		Washer 1/4" dia.	1
47		Setscrew 1/4" B.S.F. x 5/8" long Hex. Head	1
48		Nut 5/16" B.S.F.	2
49		Shakeproof Washer 5/16" dia. External	2
50	26305	Taper Pin	2
51	20861a	Blade Gudgeon Pin	1
52	17401	Connecting Rod	1
53		Washer 3/8" dia.	1
54		Truarc Retaining Ring (Type 5105-37)	1

Illus. No.	Part No.	Description	No. off.
55	20843	Connecting Rod Bush	1
56		Rivet 3/16" dia. x 5/8" long 90° Csk. Head	4
57		Setscrew 1/4" B.S.F. x 5/8" long Hex. Head	1
58		Nut 1/4" B.S.F.	1
59	20799a	Spring Washer 1/4" dia.	1
60		L.H. Ground Shoe	1
61		Pressure Plate Arched	1
62		Packing Shim	3
63	20866	Skid Support Bar	2
64		Setscrew 5/16" B.S.F. x 1.1/8" long Hex. Head	2
65		Setscrew 1/4" B.S.F. x 5/8" long Hex. Head	2
66		Setscrew 3/8" B.S.W. x 1.1/4" long Hex. Head	2
67		Locknut 3/8" B.S.W.	2
68		Setscrew 5/16" B.S.F. x 1.1/8" long Hex. Head	3
69		Setscrew 1/4" B.S.F. x 5/8" long Hex. Head	2
70		Shakeproof Washer 1/4" dia. External	5
71		Shakeproof Washer 5/16" dia. External	16
72		Pressure Plate Plain	2
73	20864	Grease Nipple 1/4" B.S.F. (N.C. 6059)	1
74		Comb Shoe	1
75	17383	Setscrew 5/16" x 5/8" long Hex. Head	4
76		Shakeproof Washer 5/16" external	4
77	20730	Double Finger (for complete assembly comprising Double Finger, Fixed Blades and Rivets quote Part No. 20855).	8
78	20731	Fixed Blade	16
79		Rivet 3/16" dia. x 7/8" long Csk. Head	16
80	20750	Moving Blade (for complete assembly comprising Support Bar, Blades, Taper Pin and Rivet quote Part No. 17400)	16
81		Rivet 3/16" dia. x 3/8" long Rd. Head	28
82	20872	Blade Support Bar	1
83	17399	Finger Support Bar	1
84	20798a	R.H. Ground Shoe	1
85		Setscrew 1/4" B.S.F. x 1/2" long Hex. Head	1
86		Setscrew 5/16" B.S.F. x 7/8" long Hex. Head	11
87		Swath Plate	1
88	17393	Setscrew 1/4" B.S.F. x 3/4" long Hex. Head	1
89		Washer 1/4" dia.	2
90		Nut 1/4" B.S.F.	1
91		Screw 1/4" B.S.F. x 3/4" long Csk. Head	1
92	17405	Connecting Link	1
93	17404	Nut 1/4" B.S.F.	1
94		Clamping Bar	1

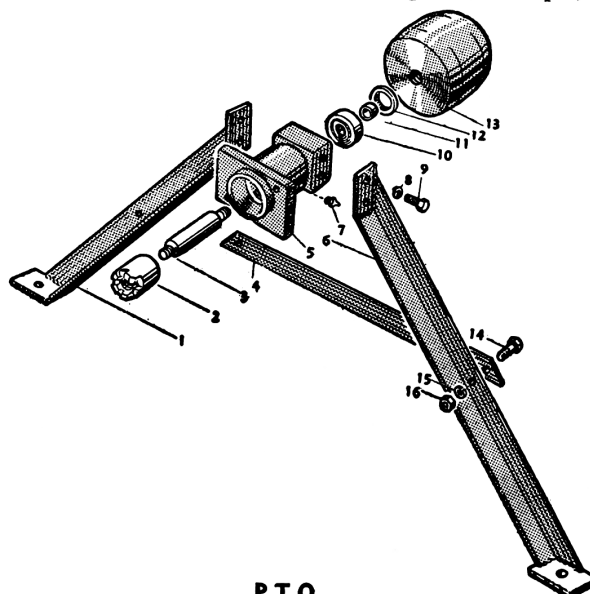
POWER TAKE OFF AND PULLEY

Fitting. Remove the rotor unit by releasing the Snap-lock clamp and replace with the Power Take Off unit. The two supports should be pegged to the ground to prevent the machine slewing, or tipping forward as the machine becomes slightly heavy in the front with the rotor removed.

The bearing should be lubricated with light grease or heavy gear oil through the grease nipple provided, every four hours of work.

Important. When using the Power Take Off unit in a stationary position it is important to engage a forward gear and have the land wheels in a neutral position. This ensures adequate lubrication in the gearbox.

Speeds: High ratio — 2150 r.p.m. (3455 f.p.s.)
Low ratio — 1490 r.p.m. (2390 f.p.s.)



Illus. No.	Part No.	P.T.O. Description	No. off.
1	17194	Support R.H.	1
2	16597	Fixed Dog	1
3	17201	Shaft	1
	17207	Shaft	1
		Circlip—Segar 1.7/8" Internal (supersedes Part No. 17201)	1
4	17192	Centre Support	1
5	17001	P.T.O. Housing	1
	17206	P.T.O. Housing (supersedes Part No. 17001.)	1
6	17193	Support L.H.	1
7		Grease Nipple 1/4" B.S.F. (type NC. 6059.)	1
8		Spring Washer 3/8" dia.	4
9		Setscrew 3/8" B.S.F. x 3/4" long Hex. Head	4
10	BRL.3/4	Ballbearing 3/4" I.D. x 1.7/8" O.D. x 9/16" W.	1
11	17203	Spacer	1
12		Oilseal 1.7/8" O.D. x 1.1/4" I.D. x 5/16" W.	1
13	17191	Pulley—(Flat Belt)	1
14		Bolt 3/8" B.S.F. x 7/8" long	2
15		Spring Washer 3/8" dia.	2
16		Nut 3/8" B.S.F.	2

When ordering parts always quote the pre-fix letter and number of the attachment, the type of attachment and the part number (not the Illustration number).

MECHANICAL HEDGE TRIMMER

1. First fit the cable to the Hedge Trimmer head by pulling out the inner cable and inserting a small nail in the hole provided to prevent it slipping back; then place the slotted shaft coupling in the peg on the flywheel of the Hedge Trimmer head making quite sure that the slot engages fully. Withdraw the nail and screw up the knurled union nut. Partial or non-engagement will ruin the peg and the complete flywheel will have to be replaced.
2. Remove the front bumper bar from under the engine and replace with the castor wheel assembly, adjusting the height of the pedestal in the clamp so that the machine is level.
3. Remove the Rotor unit or other attachment.
4. Fit the Hedge Trimmer drive unit which incorporates a pre-loaded friction drive for the cable, in place of the Rotor unit, and clamp in the same manner.
5. Insert the three-cornered end of the flexible cable drive spindle through the hole in the bearing bracket and right home into the corresponding triangular hole in the friction disc. Screw the knurled union nut of the outer casing on to the thread provided.

Working Instructions

1. Using the engine clutch in the normal way engage :—
 - (a) The right hand short (gear ratio) lever in the high ratio position.
 - (b) The right hand long (gear) lever in first or second gear position.
 - (c) The left hand long (wheel lock) lever in the NEUTRAL position.
 - (d) The left hand short (rotor clutch) lever in the 'IN' position.
- N.B. It is important that the forward gears are engaged with the land wheels disengaged in order that oil should be circulated in the gearbox, otherwise oil starvation may occur on the driving parts.
2. The machine should be placed facing the edge and on level ground. Work will normally be from left to right. Hold the trimmer with the handle formed by the butt of the cable in the right hand and the blade handle in the left hand. Ensure that the cable is hanging freely from the blade without sharp bends.
3. Cut along the top of the hedge, from both sides, if necessary, and then trim the sides from top to bottom in sections. Move the Yeoman when the limit of the cable has been reached. Do not pull the machine along by the cable, and at all times keep the cable as **straight** as possible, avoiding sharp bends.

Lubrication

1. Using gear oil or light grease in a grease-gun, give one or two shots in the gear housing grease nipple (Ill. No. 14) each time the Hedge Trimmer is used.
2. Give one shot of lubricant in the grease nipples at both ends of the cable each time the Trimmer is used (Ill. No. 33).
3. Oil the moving blade every $\frac{1}{2}$ hour of use. Wipe off any gum deposit formed on the blade assembly from the cut stems which may tend to clog the mechanism. Cover the working parts with a film of oil when put away after use.

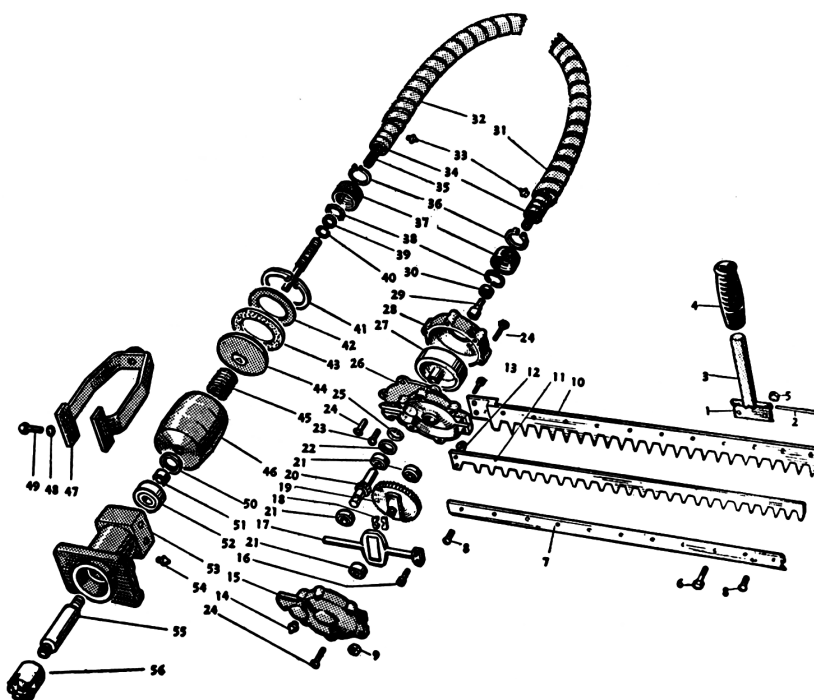
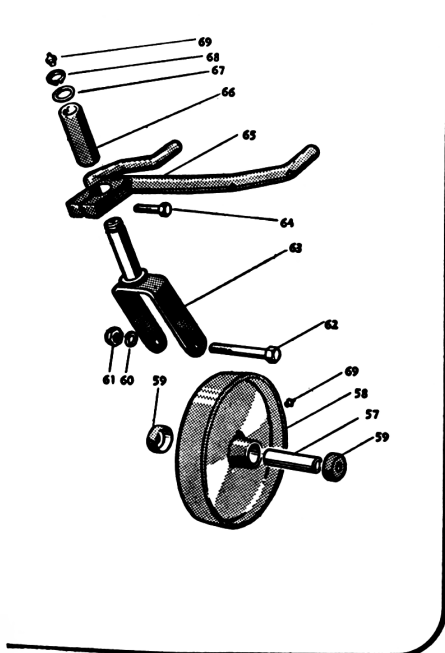
Used oil can be put into the hedge trimmer blades if it has been strained and is free from grit etc. When putting the cable away for the winter do not hang it over a nail with both ends hanging down otherwise oil will escape. Tie up the ends with wire and hook the wire on the nail. Also pour oil down into the cable from both ends.

4. Give one or two shots of lubricant in the drive union housing grease nipple on each occasion of use. (Ill. No. 54).

HEDGETRIMMER

Illus. No.	Part No.	Description	No. off.
1	20935	Handle Bracket	1
2	20964	Hinge Rod	1
3	20936	Handle	1
4	20957	Handle Grip	1
5		Locknut 3/16" B.S.W.	2
6		Setscrew 3/16" B.S.W. x 5/8" long, Hex. Head	2
7	20960	Pressure Plate	1
8		Setscrew 3/16" B.S.W. x 3/8" long Rd. Head	10
9		Nut 1/4" B.S.F.	2
10	20963	Fixed Blade Rivet Assembly	1
11	20990	Reciprocating Blade	1
12		Locknut 3/16" B.S.W.	2
13		Screw — Gearbox to Fixed Blade 1/4" B.S.F. x 1" long, Cheese Head	2
14		Grease Nipple 2 BA. (Type NC. 6055.)	1
15	20998	Upper Cover	1
16		Screw—Reciprocating Blade to Yoke 3/16" B.S.W. x 1/2 long, Cheese Head	2
17	20968	Scotch Yoke	1
18	20944	Big End Bearing	1
19	20967	Crank and Gear	1
20	20947	Pinion	1
21		Ballbearing (Hoffman S.3.)	4
22		Oilseal 08705023	1
23		Setscrew 3/16" B.S.W. x 3/4" long, Rd. Head	2
24		Setscrew 3/16" B.S.W. x 7/8" long, Csk. Head	11
25		Circlip 7/8" dia. Internal	1
26	20997	Gearbox	1
27	20948	Flywheel	1
28	20954	Lower Cover	1
29	20933	Shaft Coupling	1
30		Ballbearing	1
31	{ 17442	Cable Cover 15'	1
	{ 17436	Cable Cover 10'	1
32	17437	Hand Grip	2
33		Grease Nipple 1/4" B.S.F. (Type NC. 6059.)	2
34	{ 17440	Flexible Cable 15'	1
	{ 17434	Flexible Cable 10'	1
35	{ 17438	Flexible Shaft 15'	1
	{ 17432	Flexible Shaft 10'	1
36		Circlip 13/16" dia. External	2
37	20942	End Nut	2
38	20943	Split Collar	2
39	20940	Adaptor Collar	1
40	20939	Adaptor Circlip	1
41		Circlip 3" dia. Internal	1
42	20558	Loose Friction Plate	1

When ordering parts always quote the pre-fix letter and number of the attachment, the type of attachment and the part number (not the Illustration number).



Illus. No.	Part No.	Description	No. off.
43	20627	Ferodo Disc	1
44	20541	Friction Disc	1
45	BJ.8140	Spring	1
46	17427	Drive Housing	1
47	17424	Support	1
48		Spring Washer 3/8" dia.	4
49		Setscrew 3/8" B.S.F. x 3/4" long, Hex. Head	4
50		Oilseal 1.7/8" O.D. x 1.1/4" I.D. x 5/16" W.	1
51	17203	Spacer	1
52	BRL.3/4"	Ballbearing 1.7/8 O.D. x 3/4" I.D. x 9/16" W.	1
53	17001	P.T.O. Housing	1
	17206	P.T.O. Housing (supersedes Part No. 17001.)	1
54		Grease Nipple 1/4" B.S.F. (NC.6059.)	1
55	17201	Shaft	1
	17207	* Shaft	1
		* Circlip 1.7/8" dia. Internal (supersedes Part No. 17201.)	1
56	16597	Fixed Dog	1
57	17310	Axle	1
58	17205	Castor Wheel	1
59	17311	Dust Cover	2
60		Spring Washer 1/2" dia.	1
61		Nut 1/2" B.S.W.	1
62		Bolt 1/2" B.S.W. x 4" long	1
63	20383	Castor	1
64		Bolt 3/8" B.S.F. x 1.1/2" long	1
65	17429	Castor Clamp for Villiers Engine only	1

Illus. No.	Part No.	Description	No. off.
	17443	Castor Clamp for B.S.A. Engine only	1
66	20387	Castor Support Tube	1
67	20386	Washer	1
68		Circlip 7/8" dia. External	1
69		Grease Nipple 1/4" B.S.F. (NC.6059.)	2

SOIL SHREDDER

Fitting.

Remove the depth control skid and the two blades from the right hand flange. Replace these blades with the two special feeder blades provided. Place the required screen in position and lift the back of the machine sufficiently high to pass the shredder into position under the rotor. Lower the machine into position ensuring that the stay-tube rests within the lugs on the front of the shredder and that the sides of the rear shield are within their corresponding lugs.

Fit the securing angle across the top of the shield and secure with the wing nut provided.

Operation.

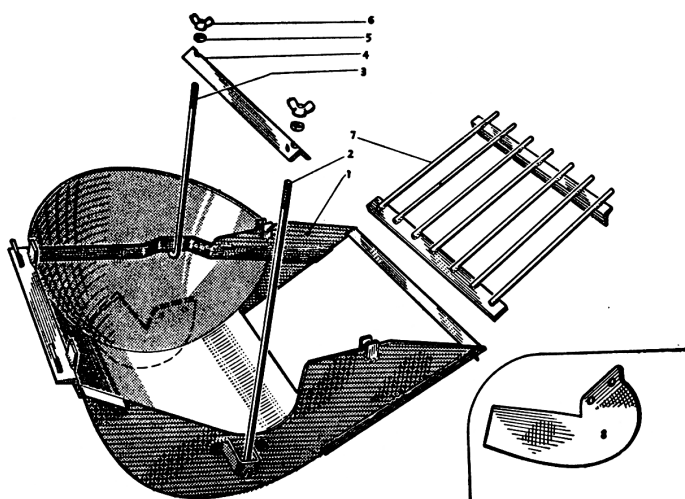
Select high or low ratios as required. **Engage a forward gear with the travel gear hand lever and put the wheel lock lever in neutral.** (This is essential in order that the gears obtain sufficient lubrication). Engage the rotor and set the engine throttle lever to run at a fair working speed. Feed the raw material into the hopper at a steady rate and clear the shredded product sufficiently quickly to avoid blocking the screen.

SOIL SHREDDER

15" Model

Illus. No.	Part No.	Description	No. off.
1	17501	Hopper	1

When ordering parts always quote the pre-fix letter and number of the attachment, the type of attachment and the part number (not the illustration number).



Illus. No.	Part No.	Description	No. off.
2	17522	Hook Rod L.H.	1
3	17523	Hook Rod R.H.	1
4	17524	Securing Angle	1
5		Spring Washer 5/16" dia.	2
6		Wing Nut 5/16" B.S.W.	2
7	17515	Screen—Fine 1"	1
	17519	Screen—Medium 1.3/8"	1
	17520	Screen—Coarse 1.3/4"	1
8	1001	Feeder Blade	2
18" Model			
1	17531	Hopper	1
2	17522	Hook Rod L.H.	1
3	17523	Hook Rod R.H.	1
4	17541	Securing Angle	1
5		Spring Washer 5/16" dia.	2
6		Wing Nut 5/16" B.S.W.	2
7	17536	Screen—Fine 1"	1
	17539	Screen—Medium 1.3/8"	1
	17540	Screen—Coarse 1.3/4"	1
8	1001	Feeder Blade	2

TRUCK HITCH AND TRANSPLANTOR HITCH Fitting

Remove the rotor or other attachment by releasing the Snaplock clamp and fit the truck hitch in the normal manner.

Lubrication

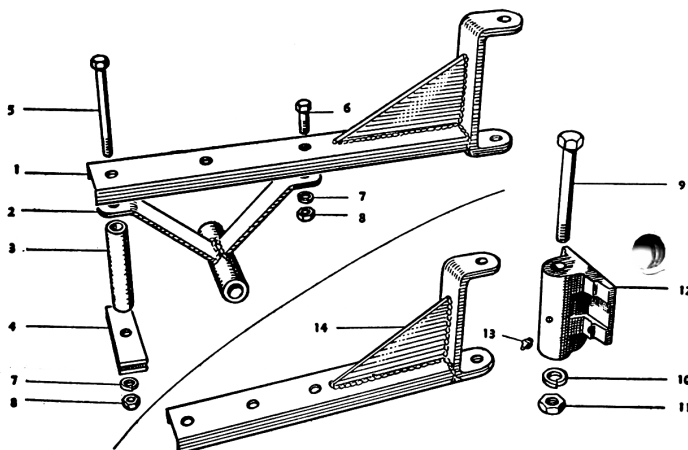
Give a few shots of light grease to the pivot grease nipple each week.

HITCH UNIT FOR TRANSPLANTER

Illus. No.	Part No.	Description	No. off.
1	17453	'Smallford Transplanter' Hitch Arm	1
2	17457	Support	1
3	17461	Spacer Tube	1
4	17460	Plate	2
5		Bolt, Hitch Arm to Support 1/2" B.S.F. x 7" long	1

When ordering parts always quote the pre-fix letter and number of the attachment, the type of attachment and the part number (not the Illustration number).

Illus. No.	Part No.	Description	No. Off
6		Bolt, Support to Hitch Arm 1/2" B.S.F. x 1.1/4" long	1
7		Spring Washer 1/2" dia.	2
8		Nut 1/2" B.S.F.	2
9		Bolt, Hitch Bracket to Arm 3/4" B.S.F. x 6.3/4" long	1
10		Spring Washer 3/4" dia.	1
11		Locknut 3/4" B.S.F.	1
12	17351	Truck Hitch Bracket	1
13		Grease Nipple 1/4" B.S.F. Straight (Tec. NC.6059)	1



TRUCK HITCH — RIGID

Illus. No.	Part No.	Description	No. Off
9		Bolt 3/4" B.S.F. x 6.3/4" long	1
10		Spring Washer 3/4" dia.	1
11		Locknut 3/4" B.S.F.	1
12	17351	Truck Hitch Bracket	1
13		Grease Nipple 1/4" B.S.F. Straight (Tec. NC.6059)	1
14	17526	Hitch Arm	1

ROLLER

The roller is used in place of the depth control skid and is intended to consolidate the land.

- (a) It may be loaded with sand to increase the weight if required and will leave a smooth surface ready for drilling or planking.

The rotor should be engaged when the roller is used and the depth controlled in the same way as for ordinary cultivation, though full depth cannot be obtained when the roller is used.

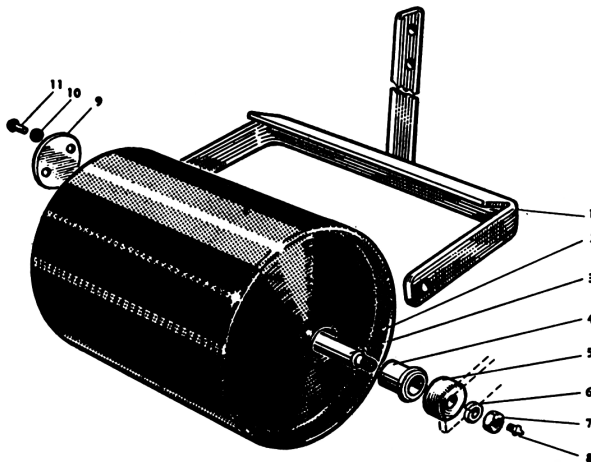
The roller axle bearing should be lubricated with light grease, giving several shots to the grease nipple after every eight hours work.

- (a) First remove the skid by pivoting the lever clip which allows the control lever to be pulled sideways until the pin engaging the skid is withdrawn then pull out the depth control skid from under the rotor shield.

Reverse this operation when fitting the roller which fits in the place of the skid.

ROLLER

Illus. No.	Part No.	Description	No. off.
1	17471	Frame 15" Model	1
	17466	Frame 18" Model	1
2	17475	Drum 15" Model	1
	17467	Drum 18" Model	1
3	17478	Axle 15" Model	1
	17468	Axle 18" Model	1
4	1005/6	Bush	2
5	1013	Dust Cap	2



6		Spring Washer 1/2" dia.	2
7		Locknut 1/2" B.S.F.	2
8		Grease Nipple 1/4" B.S.F. (NC.6059)	2
9	1011	Filler Plate	1
10		Spring Washer 1/4" dia.	2
11		Setscrew 1/4" B.S.W. x 1/2" long Rd. Head	2

FURROWER

Fitting.

The furrowing attachment is fitted on to the depth control skid. First remove the skid by pivoting the lever clip allowing the control lever to be pulled sideways until the pin engaging the skid is withdrawn; then pull out the depth control skid from under the rotor shield.

Assemble the furrowing attachment on to the depth control skid, leaving the bottom of the attachment about 1/2" above the foot of the skid, or as required for the crop to be planted, and tighten locking nut. Refit the assembly to the machine and re-connect the depth control lever.

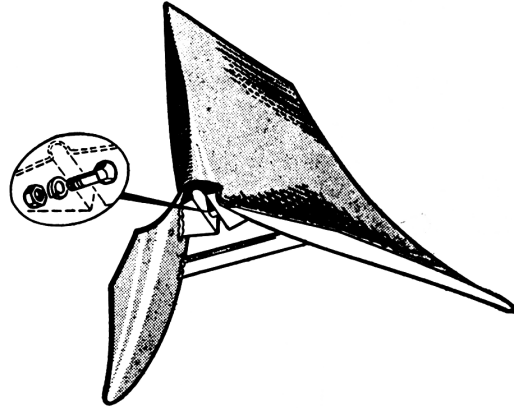
Using the Furrowing Attachment.

The furrowing attachment is used with the rotor engaged so that the combined operations of cultivating and furrowing are carried out. The depth of the furrow is controlled in the same way as the depth of cultivation. For deep work the skid is raised so that the furrowing attachment is as close to the underside of the shield as possible and bottom gear is advisable. After a little experience it will be found easy to maintain the plant-

When ordering parts always quote the pre-fix letter and number of the attachment, the type of attachment and the part number (not the Illustration number).

ing width required by judging the distance between the wheel and the thrown-up soil.

When "splitting the ridges" for earthing up potatoes handling is easier if alternate ridges are split first, so that each wheel is resting equally, either on the slopes of the ridge which is being straddled or partially supported on soil thrown up each side by the adjacent half earthed-up furrows. In this way the machine will always be level.



17491	FURROWER	
	Furrower.	1
	Bolt 1/4" B.S.F. x 1" long	1
	Spring Washer 1/4" dia.	1
	Nut 1/4" B.S.F.	1

TOOLBAR

Fitting Instructions.

(a) Rear Mounting.

1. Remove the Rotor unit or other attachment from the Yeoman.
2. Fit the toolbar by attaching the pivot block with the Snaplock clamp. The castor wheels will be at the rear.
3. Clamp the appropriate tools on the bars of the toolframe with the clamps provided—spacing according to the requirements of the cap.

(b) Front Mounting.

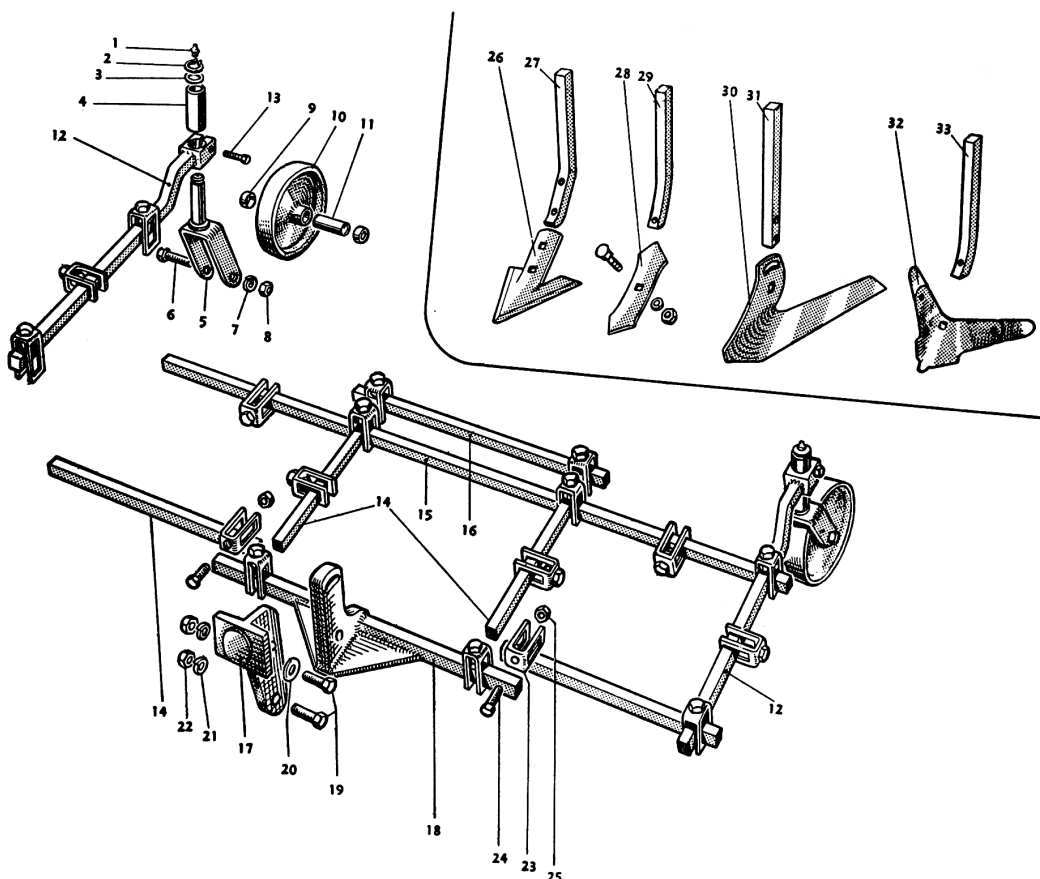
1. Leave the pivot block assembly complete with bar in the Snaplock Clamp to seal the P.T.O. opening.
2. Replace the Pivot Block and Bar with the short spare Bar provided.
3. Remove the Engine Bumper Bar, and clamp the two centre front-to-rear Bars on the top of the engine Bumper Bar supports. In this position, the castor wheels are in front of the toolframe.

Working Instructions.

The toolbar is levelled by adjusting the height of the castor wheels which can be moved up and down in the block and clamped by the locking setscrew. (Illus. No. 13).

In the rear position the two large bolts in the pivot block (one of which travels in a slotted hole) should be slackened, the toolframe levelled and the nuts and bolts retightened in the correct position.

Under some conditions it may be preferable to remove the castor wheels.



TOOL BAR CASTOR ASSEMBLY

Illus. No.	Part No.	Description	No. off.
1		Grease Nipple 1/4" B.S.F. (Tec. NC.6059)	4
2		Circlip 7/8" dia. External	2
3	20386	Special Washer	2
4	20387	Castor Support Tube	2
5	20383	Castor	2
6		Bolt 1/2" B.S.W. x 4" long	2
7		Spring Washer 1/2" dia.	2
8		Nut 1/2" B.S.W.	2
9	17311	Dust Cover	4
10	17205	Castor Wheel	2
11	17310	Axle	2

FRAME AND PICK-UP BRACKET ASSEMBLY

12	17307	Castor Support Arm	2
13		Bolt 3/8" B.S.F. x 1.1/2" long	2
14	17306	Tool Bar Short	4
15	17305	Tool Bar Long	1
16	17299	Support Bar	1
17	17291	Pick-up Bracket	1
18	17297	Support Bar Bracket	1
19		Bolt 9/16" B.S.F. x 2" long	2
20		Washer 9/16" dia.	1
21		Spring Washer 9/16" dia.	2
22		Nut 9/16" B.S.F.	2
23	17312	Clamp	18
24		Setscrew 1/2" U.N.F. x 1.1/8" long Hex. Head	18
25		Nut 1/2" U.N.F.	18

TOOLS — OPTIONAL ALTERNATIVES

26	R.H.106	Centre Shovel 6"	1
	R.H.107	Centre Shovel 8"	1
27	17316	Holding Bar	1
		Bolt 7/16" B.S.W. x 1.1/2" long Rd. C/sk. Head Sq. Neck	2
		Spring Washer 7/16" dia.	2
		Nut 7/16" B.S.W.	2
28	R.H.101	Cultivator Point	1
29	17325	Holding Bar	1
		Bolt 3/8" B.S.W. x 1.1/2" long Rd. C/sk. Head. Sq. Neck.	
		Spring Washer 3/8" dia.	1
		Nut 3/8" B.S.W.	1
30	*RH.102/L.	Side Hoe L.H. 6"	1
	*RH.102/R.	Side Hoe R.H. 6"	1
	*RH.102/L.	Side Hoe L.H. 8"	1
	*RH.103/R.	Side Hoe R.H. 8"	1
	*Alternatives		
31	17330	Holding Bar	1
		Bolt 7/16" B.S.W. x 1.1/2" long Rd. C/sk. Head. Sq. Neck	2
		Spring Washer 7/16" dia.	2
		Nut 7/16" B.S.W.	2
32	R.H.109	Furrow Opener	1
33	17318	Holding Bar	1
		Bolt 3/8" B.S.W. x 1.1/2" long Rd. C/sk. Head. Sq. Neck.	1
		Spring Washer 3/8" dia.	1
		Nut 3/8" B.S.W.	1